



JADE BARBER NAIL & BEAUTY EXCELLENCE

NAIL ONLINE CASE STUDY REQUIREMENTS

A case study is photographic evidence of your work to show your understanding of both the theory and practical taught on your course and the ability to apply this to real models outside of your training.

- Students **MUST** pass the required case studies in order to gain their certification.
- Case studies are assessed by trainers from the Nail & Beauty Excellence team.
- Each case study must be performed on a **different model** – select “suitable models” that showcase your ability to work on a variety of nail types.
- We will accept a maximum of 3 resubmissions of that case study (any resubmission **MUST** be performed on a different model).
- Case studies will be assessed within 5 working days (due to staff commitments).
- The trainer’s decision on case studies is final.
- Do **NOT** send all of your case studies at once, wait for our feedback where you may be requested to work on certain areas. If multiple case studies are sent at once then it is likely you will be asked for resubmissions.
- Photographs/Video **MUST** be clear, taken close up and in good lighting. You **MUST** send the correct photographs as demonstrated on the next pages. Failure to provide the correct photographs may lead to a fail.
- Do **NOT** use any editing apps, filters or skin smoothing on your photos, this will result in a **FAIL**.

In all case studies please state the following:

- Your full name
- The course you attended

- The date of the course you attended/purchased
- Your case study number (case study #1,#2,#3 etc or “Resubmission of case study #2 etc.
- Describe in detail the shape choice and reasons for this (**Beginners students use square shape**)
- The type of smile line used (**Deep, natural smile, straight**)
- The products you used. (**Colour acrylic, cover pink, glitter**)
The techniques used - tips or sculpting, pink and whites etc.
- Describe what you felt went well and what didn't/could be improved on

**For any clarification of the above please contact us
Case studies are to be emailed to**

Additional requirements for each course

Beginners Acrylic/Acrygel:

You are required to submit and pass 3 case studies for this beginners' course.

Case study 1:

For this case study we would like to see a clear set of enhancements, followed by Gel polish application on top of the enhancement. This will allow us to see your ability to work with clear acrylic, which will show any imperfections, followed by your ability to apply Gel polish to the enhancement.

Required photographs: (please take photographs of the whole hand unless stated, see guidance photographs below for the required angles).

1. Before (client's natural nails with no prep etc)
2. Nail prep (cuticle work, removing shine from nails, dehydrated etc)
3. Tip application and shaped
4. Clear Acrylic application before filing
5. Clear Acrylic application after filing
6. Side on photograph of an individual nail (for apex placement)
7. Close up of an individual nail (product control)
8. Gel polish over clear enhancement's, top coat and cuticle oil (finished nails)
9. Video of you doing 1 nail from start to finish.

Case study 2:

For this case study we would like to see your ability to create a set of pink and whites.

Required photographs: (please take photographs of the whole hand unless stated, see guidance photographs below for the required angles).

1. Before (client's natural nails with no prep etc)
2. Nail prep (cuticle work, removing shine from nails, dehydrated etc)
3. Tip application and shaped
4. Cover pink with reverse smile lines unfiled
5. Cover pink with reverse smile lines filed
6. White tip application filed
7. Side on photograph of an individual nail (for apex placement)
8. Top coat, cuticle oil and finished nail
9. Video of you doing 1 nail from start to finish.

Case study 3:

For this case study we would like to see your ability to create a French Gel manicure

Required photographs: (please take photographs of the whole hand unless stated, see guidance photographs below for the required angles).

1. Before (client's natural nails with no prep etc)
2. Nail prep (cuticle work, nail shaping, removing shine from nails, dehydrated etc)
3. White smile line over pink base
4. Top coat, cuticle oil (finished nails)
5. Video of you doing 1 nail from start to finish.

Beginners gel polish:

You are required to submit and pass 2 case studies for this beginners gel polish' course.

Case study 1:

For this case study we would like to see a RED set of enhancements, This will allow us to see your ability to work with RED polish, which will show any imperfections, followed by your ability to apply Gel polish nice a neat.

Required photographs: (please take photographs of the whole hand unless stated, see guidance photographs below for the required angles).

1. Before (client's natural nails with no prep etc)
2. Nail prep (cuticle work, nail shaping, removing shine form nails, dehydrated etc)
3. Red colour
4. Top coat, cuticle oil (finished nails)
5. Video of you doing 1 nail from start to finish.

Case study 2:

For this case study we would like to see your ability to create a French Gel manicure

Required photographs: (please take photographs of the whole hand unless stated, see guidance photographs below for the required angles).

1. Before (client's natural nails with no prep etc)
2. Nail prep (cuticle work, nail shaping, removing shine form nails, dehydrated etc)
3. White smile line over pink base
4. Top coat, cuticle oil (finished nails)
5. Video of you doing 1 nail from start to finish.

Acrylic conversion/Skill building:

You are required to submit and pass 2 case studies for this Acrylic conversion/ Skill building course.

Case study 1:

For this case study we would like to see a set of Pink and white acrylic enhancements using a nail shape of your choice, that also suit the client and is covered in the course.

Required photographs: (please take photographs of the whole hand unless stated, see guidance photographs below for the required angles).

1. Before (client's natural nails with no prep etc)
2. Nail prep (cuticle work, removing shine form nails, dehydrated etc)
3. Tip application and shaped or forms
4. Cover pink with reverse smile lines unfiled
5. Cover pink with reverse smile lines filed
6. Applied white acrylic and pinched nail (photograph of one pinched nail)
7. Filed enhancement
8. Side on photograph of an individual nail (for apex placement)
9. Top coat, cuticle oil and finished nail
10. Video of you doing 1 nail from start to finish.

Case study 2:

For this case study we would like to see your ability to create a smile line with coloured/glitter tip (choice of colour/glitter or both)

Required photographs: (please take photographs of the whole hand unless stated, see guidance photographs below for the required angles).

1. Before (client's natural nails with no prep etc)
2. Nail prep (cuticle work, removing shine form nails, dehydrated etc)
3. Tip application and shaped or forms
4. Cover pink with reverse smile lines unfiled
5. Cover pink with reverse smile lines filed
6. Applied coloured or glitter acrylic or both and pinched nail (photograph of one pinched nail)
7. Filed enhancement
8. Side on photograph of an individual nail (for apex placement)
9. Top coat, cuticle oil and finished nail
10. Video of you doing 1 nail from start to finish.

Acrygel conversion/ Skill building:

You are required to submit and pass 2 case studies for this Acrygel conversion/ Skill building course.

Case study 1:

For this case study we would like to see a set of Pink and white Acrygel enhancements using a nail shape of your choice, that also suit the client and is covered in the course.

Required photographs: (please take photographs of the whole hand unless stated, see guidance photographs below for the required angles).

1. Before (client's natural nails with no prep etc)
2. Nail prep (cuticle work, removing shine form nails, dehydrated etc)
3. Tip application and shaped or forms
4. Cover pink with reverse smile lines unfiled
5. Cover pink with reverse smile lines filed
6. Applied white Acrygel and pinched nail (photograph of one pinched nail)
7. Filed enhancement
8. Side on photograph of an individual nail (for apex placement)
9. Top coat, cuticle oil and finished nail
10. Video of you doing 1 nail from start to finish.

Case study 2:

For this case study we would like to see a set of Pink and white Acrylic enhancements using a nail shape of your choice, that also suit the client and is covered in the course.

For this case study we would like to see your ability to create a pink and white using a different nail shape to the previous case study.

Required photographs: (please take photographs of the whole hand unless stated, see guidance photographs below for the required angles).

1. Before (client's natural nails with no prep etc)
2. Nail prep (cuticle work, removing shine form nails, dehydrated etc)
3. Tip application and shaped or forms
4. Cover pink with reverse smile lines unfiled
5. Cover pink with reverse smile lines filed
6. Applied white Acrygel and pinched nail (photograph of one pinched nail)
7. Filed enhancement
8. Side on photograph of an individual nail (for apex placement)
9. Top coat, cuticle oil and finished nail
10. Video of you doing 1 nail from start to finish.

Hard Gel conversion/ Skill building:

You are required to submit and pass 2 case studies for this Hard Gel conversion/ Skill building course.

Case study 1:

For this case study we would like to see a set of Pink and white Hard Gel enhancements using a nail shape of your choice, that also suit the client and is covered in the course.

Required photographs: (please take photographs of the whole hand unless stated, see guidance photographs below for the required angles).

1. Before (client's natural nails with no prep etc)
2. Nail prep (cuticle work, removing shine from nails, dehydrated etc)
3. Tip application and shaped or forms
4. Cover pink with reverse smile lines unfiled
5. Cover pink with reverse smile lines filed
6. Applied white Hard Gel and pinched nail (photograph of one pinched nail)
7. Filed enhancement
8. Side on photograph of an individual nail (for apex placement)
9. Top coat, cuticle oil and finished nail
10. Video of you doing 1 nail from start to finish.

Case study 2:

For this case study we would like to see your ability to create a smile line with coloured/glitter tip (choice of colour/glitter or both)

For this case study we would like to see your ability to create a pink and white using a different nail shape to the previous case study.

Required photographs: (please take photographs of the whole hand unless stated, see guidance photographs below for the required angles).

1. Before (client's natural nails with no prep etc)
2. Nail prep (cuticle work, removing shine from nails, dehydrated etc)
3. Tip application and shaped or forms

4. Cover pink with reverse smile lines unfiled
5. Cover pink with reverse smile lines filed
6. Applied white Hard Gel and pinched nail (photograph of one pinched nail)
7. Filed enhancement
8. Side on photograph of an individual nail (for apex placement)
9. Top coat, cuticle oil and finished nail
10. Video of you doing 1 nail from start to finish.

In each case Skill Building case study, you MUST also show evidence of these additional points:

- Do NOT cut the clients cuticle's as this will result in a FAIL.
- Do NOT touch the skin with the product as this will result in a FAIL
- Do NOT leave a step at the cuticle, this will result in a FAIL
- Demonstrate crisp smile lines.
- The use of a different shape per case study, either - Square, almond, tapered square etc
- Demonstrate the correct pinching. Please show this with your close-up photograph of your pinch. (Take photograph down the barrel of the nail)
- Colour acrylic and glitters (capped)
- Parallel side walls.
- Correct C curve
- Correct apex placement. Please show this with your close-up photograph of your apex. (Photograph side on)
- Demonstrate the correct product application (no air bubbles or touching of the skin with any product). Please show this with your close-up photograph of your application.
- You MUST finish the nail with a nice smooth finish. (No imperfections)

In each Beginners case study, you MUST also show evidence of these additional points:

- Do NOT cut the clients cuticle's as this will result in a FAIL.
- Do NOT touch the skin with either acrylic or Gel polish as this will result in a FAIL
- Do NOT leave a step at the cuticle (enhancements case studies) – this will result in a FAIL
- Demonstrate the correct apex placement. Please show this with your close-up photograph of your apex. (Photograph side on)
- Demonstrate the correct product application (no air bubbles, thick Gel polish or touching of the skin with any product). Please show this with your close-up photograph of your application.
- You MUST finish the nail with a nice smooth finish. (No imperfections)

Case studies are to be emailed

Failure to provide the correct photos may result in your case study being rejected

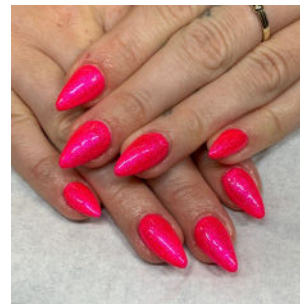
Send via email/multiple emails or via a free transfer site - www.wetransfer.com

Before nail

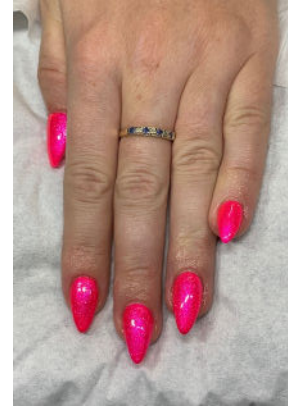
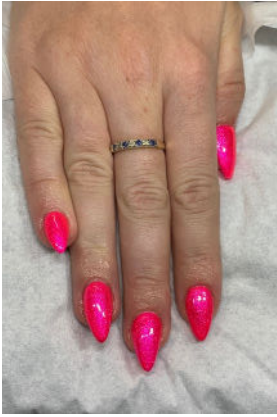


Left hand completed

After nails are complete



Right hand completed



Tips or forms



Acrylic shaped and filed



Side on for apex placement lines



Close up for product control/smiles



Pinching (advanced nail courses only)



(Gel polish



We ask for 1 Video of you doing 1 nail from start to finish per case study